

Currents

Inside...

Director's Note.....	2
Gathering Report.....	2
Folk Festival.....	3
MSU CGLC Fellow.....	3

The Newsletter of the Center for Great Lakes Culture

Issue 3, June 2002

CGLC Advisors Meet to Map Programs

The CGLC advisors met in April in East Lansing to continue mapping the future programmatic development of the Center. The meeting proved to be very productive as a number of new initiatives were discussed and launched.



Among the actions taken were the following: the CGLC will host an annual conference on a designated theme that would build on the "Gatherings Program." The conference would rotate locations each year, one year it would be at a designated site in the region and next would be at MSU. A CGLC Advisor's business meeting will accompany each conference. Organizers will strive to take full advantage of the local culture at each location.

Discussions continued on the importance of the development of a virtual guide to Great Lakes regional collections resources. A small group of advisors has agreed to work on a plan for such a directory.

The advisors agreed to support the continuation of the highly successful "Gatherings Program" for the coming years. This program supports the meeting of scholars and humanities public sector workers to meet to explore

themes related to the culture of the region. There are some emerging proposals for upcoming Gatherings already approved.

The advisors endorsed a number of ideas to continue the active development of all phases of the virtual aspects of the Center. Advisors will be contacted on a regular basis for calendar entries and for additional web site content. Addie Guzman, the CGLC Outreach Education Extension Specialist will be in contact with Advisors to follow-up on these and other ideas.

Lastly, the 2002 CGLC Awards were presented for Best Book (non-fiction) and Best Web Site (see related article in this issue). The jury for Best Exhibition chose not to make an award in 2002. The advisors approved the proposal to add another book award next year for fiction (poetry or prose).



More information on the Great Lakes Folk Festival can be found at the official website of the Festival, www.greatlakesfolkfest.net.

Celebrating culture, tradition and community: Great Lakes Folk Festival, August 9-11 2002

MSU MUSEUM, EAST LANSING, MICH. - Music, dance and arts are center stage in East Lansing as the new Great Lakes Folk Festival takes shape. The event, set for Aug. 9-11 in downtown East Lansing, succeeds the popular National Folk Festival (NFF) that the city hosted 1999-2001.

The Michigan State University Museum is producing the new event in partnership with the Center for Great Lakes Culture. Both entertaining and educational, the Great Lakes Folk Festival is a special fusion of arts fair, music festival, county fair, hands-on activity workshops, living museum exhibitions, and celebration of multi-ethnic heritage.

Multiple music stages, presented by the City of East Lansing, will feature a diverse array of talent and tradition in many musical genres, among those performing include:

- Howard Armstrong Trio** - Blues fiddle and old-time string band
- The Campbell Brothers** - African-American sacred steel guitar
- Liz Carroll** - Irish fiddle
- Karan Casey** - Irish song
- David "Honeyboy" Edwards** - Mississippi Delta-style blues
- Mamadou Diabete** - Mali, West Africa kora music
- Matapat** - French-Canadian music and dance
- Steve Meisner** - Cleveland-style Polka
- Tlen-Huicani** - Jalapa, Veracruz, Mexico Arpa jarocho music



The Center for Great Lakes Culture
MSU Museum
Michigan State University
East Lansing, MI 48824
greatlakes@cal.msu.edu
www.greatlakes.msu.edu

cont on page 3

CGLC Events

Aug 9-11
East Lansing, MI
Great Lakes Folk Festival.

Regional Events

Now-December 2002
Ohio Historical Center
Columbus, OH
Exhibit: Kilroy Was Here: The 1940s Revisited.

June-Aug 18
Michigan Historical Museum
Lansing, MI
Schooner in the Sand: Unlocking the Secrets of a Great Lakes Shipwreck.

June 15-Dec 20, 2004
Lambton Heritage Museum
Grand Bend, Ontario
Idle Hours...Summers By The Lake exhibit.

June 15-16
Cicott Park
Independence, IN
Cicott's Gathering Along the Wabash Pow Wow.

June 15-16
Edgewater Park
Cleveland, OH
American Indian Education Center's 8th Annual Competition PowWow.

June 22-23
Louis Adado River
Front Park
Lansing, MI
Dancing by The Riverbank Traditional Pow Wow.

June 23-28
Hamilton, Ontario
Managing Shared Waters
Coastal Zone Canada
2002 Great Lakes Conference.

July 3
Columbus, OH
Kids Discovery Day: Celebrate the First Ohioans.



Dr. C. Kurt Dewhurst, Director

The Center for Great Lakes Culture has been deeply engaged in a number of new major efforts. On August 9-11, the first Great Lakes Folk Festival will take place in East Lansing, MI. This major festival will showcase the rich cultural heritage of the region and the nation through music, dance, crafts, storytelling, games, and food. It will feature living

museum exhibitions, hands-on activities, and it will be a celebration of the multi-cultural life in our region. A special element will be a Humanities Institute for teachers connected with the festival that is being supported by an Eisenhower Foundation Grant with additional support from the Michigan Department of Education, the Michigan Council for the Arts and Cultural Affairs, the Michigan Humanities Council, and Michigan State University Museum. You are invited to attend this exciting free festival. For more program details, visit the CGLC web site.

Plans are coming together for an important series of three Salzburg Seminars over the next three years in Salzburg, Austria. The CGLC is one of the organizing partners. The series title is: "Communities & Culture: Creating and Sustaining a Sense of Community." An international planning team has been identified and the program details will be formulated at a planning meeting in November in Salzburg. This promises to break new ground in the exploration of how culture defines and reaffirms community. The initial session will focus on a post diaspora

examination of how communities are formed and reassembled. I will be reporting back periodically on this series of seminars.

I am pleased to announce that our first CGLC annual thematic conference will be on Great Lakes Maritime Culture. It will be led by Dr. Gail Vander Stoep, a member of the CGLC Steering Committee. Gail will be providing more detail on date, location, and program in the next issue of CURRENTS. All of our CGLC advisors will be invited to attend the annual business meeting during this meeting.

As you will see in this issue, the CGLC is also pleased to share news of the appointment of our latest CGLC Fellows. We have awarded fellowships to support research projects at the Newberry Library and at Michigan State University. See this issue for the profiles of the Fellows and their projects.

The CGLC is working with the MSU Library to partner on a number of presentations by CGLC Fellows and researchers as part of the MSU Library Colloquia Series. These lectures/presentations will be posted on the CGLC web site calendar. Planning is also underway on new classes at MSU on Great Lakes Culture in a number of departments.

This is part of an effort to create a specialization in Great Lakes culture.

I always enjoy hearing from others with interests in Great Lakes culture. One of the goals of the CGLC is to develop more institutional partnership projects so please feel free to e-mail me your thoughts, ideas, suggestions, or reactions.

 Gathering Report

Foodways, Regionalism and Regional Foodways

The Foodways Gathering was for the purpose of discussing issues of regionalism and regional foodways. Gathering members included enthusiasts from Ann Arbor, Southfield, and Grass Lake, Michigan; Bowling Green and Columbus, Ohio; Chicago, Illinois; Madison, Wisconsin; Willowdale, Ontario; and Indianapolis, Indiana as well as Minnesota, Kentucky and West Virginia, the complete region was represented. In the diversity of approaches to the study of foodways, this gathering reflects the field well.

With the support of the Steering Committee of the Center for Great Lakes Culture, a gathering of foodways specialists took place at the Michigan State University Museum in the spring of 2001. This was the first gathering of foodways specialists of its kind in the Midwest. Discussion about regional foodways, for example, inter- and intra-regional influences on regional foodways, examples of regional foodways was lively and the examples in each category were extensive. Considerable time was spent on identifying resources by categories and talking about an inventory. For more information on the Gathering, contact Addie Guzman, addie@mail.h-net.msu.edu.



July 7-13

Isle Royale National Park , MI
Ecology of the Great Lakes Workshop
 Ecology of the Great Lakes aboard the Lake Guardian research vessel.

July 10-11

Adams County, OH
View to the Past for Teachers.

July 16-17

Newark , OH
 Summer Teachers and Learners Workshop
Ohio's Agriculture is History.

July 20-21

Vigo County Conservation Club
 Terre Haute, IN
7th Annual Gathering of the People Pow Wow.

Aug 2002-2003

Mattoon Research & Exhibit Center
 Mattoon, IL
I've Been Working on the Railroad exhibit.

Aug 3

Rotary Park
 Pekin, IL
Glimpses of the Past.

Aug 4

Piqua Historical Area
 Piqua, OH
 Boat-Building Workshop.

Aug 8

Twin Rivers Public Library
 Colona, IL
Illinois Folk Music for Little Folks.

Aug 14

Cleveland, OH
'Remembering the FITZ'
 The sinking of the Steamer Edmund Fitzgerald.

Aug 24

Piqua, OH
Stories on the Canal.

Aug 31-Sept 2

Grove City, OH
20th Annual Labor Day Weekend Powwow.

Great Lakes Folk Festival is almost here! (cont from page 1)

Art all around us: Masters of the Building Arts

Consider the enduring beauty of plaster, paint, glass and clay that master craftworkers bring to our built environment. A new feature in the Great Lakes Folk Festival is the Masters of the Building Arts program, presented in cooperation with the Center for Folklife and Cultural Heritage, Smithsonian Institution, Washington, D.C.

The tools, techniques, and artistry of the building arts center on Michigan's recent State Capitol restoration project — including decorative plaster and painting, woodcarving, lighting and ornamental landscaping on the masterful makeover for Michigan's historic architectural jewel. The Children's Folk Activities Area will feature a focus on building arts too: kids can measure, hammer, trim and even build a fort at this year's GLFF.

The MSU Museum folklife and special events staffs are working on producing a variety of programs that showcase our country's cultural heritage. Look forward to the return of many popular programs from the NFF event: Folk Arts Marketplace with museum-quality crafts and hands-on crafts workshops; Taste of Traditions Food Court, with regional and ethnic foods; Children's Folk Activities Area; Traditional Games Area featuring Great Lakes variations of dominoes, euchre and cribbage; "Great Lakes, Great Quilts" quilt demonstrations and display; and the Michigan Heritage Awards, honoring the state's tradition-bearers in music, arts and community folklife.



For more information, contact the Great Lakes Folk Festival at 517.432.GLFF (4533). The new Great Lakes Folk Festival web site continues to expand with information on volunteer sign-up forms, updates on performances, schedules and other festival developments - see www.greatlakesfolkfest.net.

Krouse receives MSU CGLC fellowship



Susan Applegate Krouse, assistant curator for Great Lakes Ethnology at the MSU Museum and assistant professor of anthropology, has been awarded a 2002 fellowship from the Center for Great Lakes Culture at Michigan State University. Krouse's work with the fellowship will focus on documenting a Native American flag raising ceremony in Wisconsin. In 2001, Krouse, Oklahoma Cherokee, began a collaborative

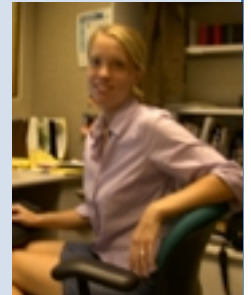
project with photographer Tom Jones, Ho Chunk, to document Ho Chunk (also known as Winnebago) warriors from the nation at Black River Falls, Wisc. This summer, they will expand this collaboration, with support from a fellowship through the Center for Great Lakes Culture. They will document the Ho Chunk Memorial Day Powwow, where families of Ho Chunk veterans gather to honor their warriors with a flag raising ceremony. Krouse will conduct ethnographic interviews with the families of Ho Chunk veterans, while Jones will photograph the flags and the memorials created at the flagpoles by the families. The Center for Great Lakes Culture, in the College of Arts and Letters at MSU, promotes the understanding of the history, people, traditions and customs of the Great Lakes region.

INSIDE CGLC

CGLC Outreach Extension Specialist

In the fall 2001, CGLC hired its first Outreach Extension Specialist, Addie Guzman. Addie is a graduate of MSU with a Bachelor of Arts in Advertising.

Her career began as an Outreach Specialist for MATRIX/H-Net, a cornerstone unit of CGLC, on MSU's campus. After taking a year off to do IT consulting, Addie is here to work on specializing communications for the Center. Webmaster, managing editor for the newsletter, Listserv coordinator, as well as CGLC Calendar administrator, Addie is keeping very busy these days running the day to day activities of the Center. Addie can be reached at addie@mail.h-net.msu.edu.



Sept 13
 Macomb, IL
Folk Music and Folk Musicians in Central Illinois.

Sept 22
 Oak Brook, IL
Illinois and the Underground Railroad.

September 20-29
 Huron County Museum
 Goderich, Ontario
Celebrating Our Marine Heritage Festival.

Sept 24
 Kalamazoo, MI
2002 Imagining Michigan Conference.

Sept 27
 Akron, OH
Wine Tasting - Great Lakes and Beyond.

More events and a continuously updated calendar can be found on CGLC's web site at: greatlakes.msu.edu/calendar.

New 2002 Fellows

Welcome Susan Applegate Krouse, MSU Fellow

Susan Applegate Krouse, assistant curator for Great Lakes Ethnology at the MSU Museum and assistant professor of anthropology (see article page 1).

Welcome 2002 CGLC/Newberry Library Fellows

The one month fellowships will assist these individuals in their research using the Newberry Library collections in Chicago:

Brian k. Page, associate professor of Geography, University of Colorado, Denver. *Title of project:* "Fashioning Region, Re-fashioning Nature: Cities, Hinderlands, and Environmental Change in the Historical Midwest."

Silvana R. Siddali, assistants professor of History, Illinois State University. *Title of project:* "'Land Too Dear for Purchase': Geography, Statehood, and Politics in the Old Northwest."

Welcome Mr. Howard Paige, Visiting Scholar

Mr. Howard Paige of Southfield, MI has been appointed as a Visiting Scholar in the Center for Great Lakes Culture to support his research on African American food traditions. He will be working with the internationally recognized cookbook collection of the Michigan State University Library.

Coming up...

2002 Imagining Michigan Conference

One of the most dynamic movements in the arts and humanities today, the creative collaboration between campuses and the communities they serve. Over the past several years, some of the freshest, most innovative cultural programs have sprouted from the joining of universities, colleges, and community groups. The upcoming "Imagining Michigan 2002" conference supports this movement in the Great Lakes state and is to be held September 24, 2002, Fetzer Center, Western Michigan University, Kalamazoo, Michigan. For more information, contact ImaginingAmerica@umich.edu or visit <http://www.ia.umich.edu/>.



The Center for Great Lakes Culture
 MSU Museum
 Michigan State University
 East Lansing, MI
 48824
greatlakes@cal.msu.edu
greatlakes.msu.edu

Name
 Organization
 Address
 City, State Zip